



Minidriver Installation

(For IT support departments)

Minidriver Version 1.2.8

About IDEMIA

OT-Morpho is now IDEMIA, the global leader in trusted identities for an increasingly digital world, with the ambition to empower citizens and consumers alike to interact, pay, connect, travel and vote in ways that are now possible in a connected environment.

Securing our identity has become mission critical in the world we live in today. By standing for Augmented Identity, we reinvent the way we think, produce, use and protect this asset, whether for individuals or for objects. We ensure privacy and trust as well as guarantee secure, authenticated and verifiable transactions for international clients from Financial, Telecom, Identity, Security and IoT sectors.

With close to €3bn in revenues, IDEMIA is the result of the coming together of OT (Oberthur Technologies) and Safran Identity & Security (Morpho). This new company counts 14,000 employees of more than 80 nationalities and serves clients in 180 countries.

| For more information, visit www.idemia.com / Follow @IdemiaGroup on Twitter

Table of contents

Introduction	4
IDEMIA MSI Package	4
Installation steps:	4
For Virtual Machines:	5
Note: Difference in ID-One PIV cards: V7 and V8 cards	6
To address this issue:	6

Introduction

The document is for IT support departments/groups who install the Minidriver on physical machines for ID-One PIV 2.4.x cards from IDEMIA. IDEMIA will provide the installation files with this document. The document describes the installation steps.

IDEMIA MSI Package

IDEMIA provides the minidriver MSI files for x86 and x64, and the package is compatible with the following systems:

- Windows Vista/7.X/8.X
- Window 10
- Window Servers such as 2012, 2016, and 2019

Installation steps:

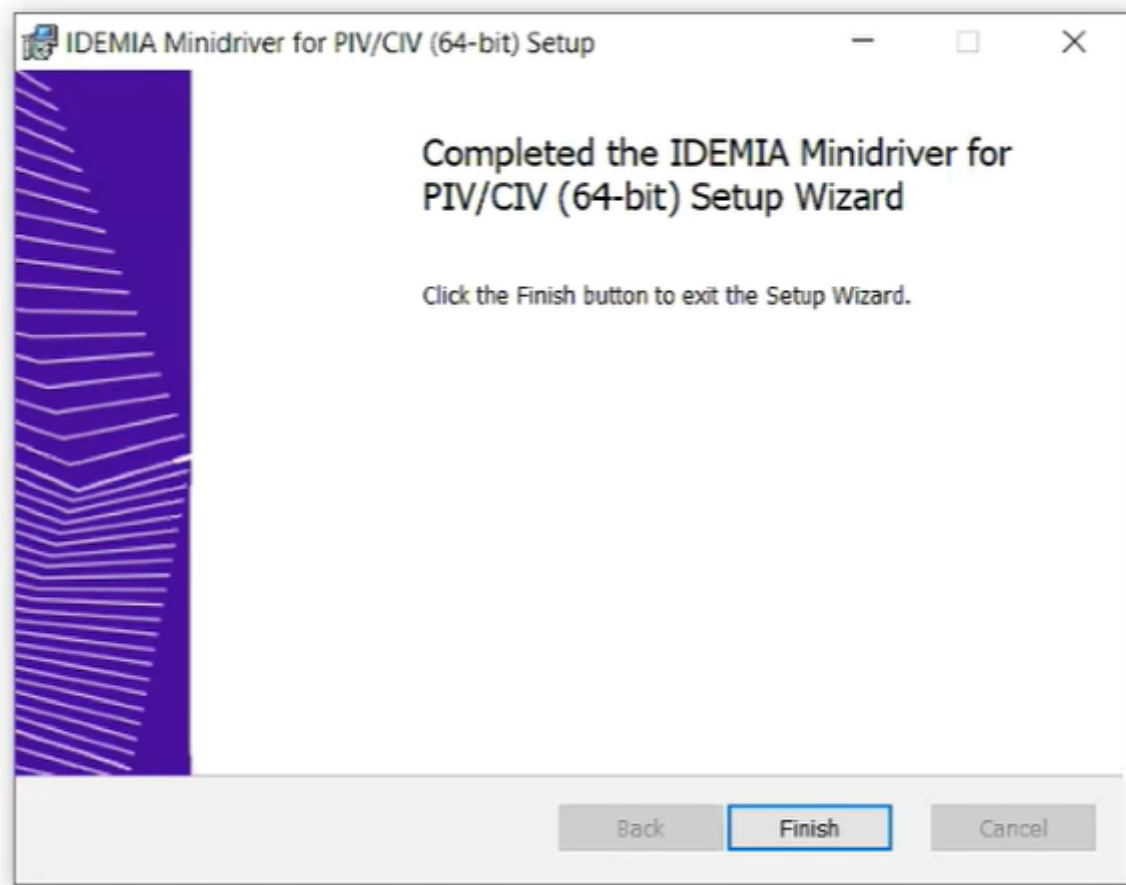
Users with Administrator privileges install MSI files depending on the type of file selected.

1. for 64 bit systems: CivMinidriver-1.2.8 64-bit.msi
2. for 32-bit systems: CivMinidriver-1.2.8.msi

Once the user clicks on the selected file, the next screen appears as follows:



3. After accepting the License Agreements, the MSI file installs the Minidriver on the machine.
4. The following message will appear.



5. The process installs the Minidriver on the physical machines only.
6. The installation completes the registry settings as ID-One PIV 2.4.x cards are placed in the connected card readers on physical machines.

For Virtual Machines:

1. Refer to the document "Minidriver_Document_V1.pdf" and "All3Enteries.reg" files for details
2. After the steps mentioned above, an Administrator must run "All3Enteries.reg" on the virtual machines to complete the process. Rename the All3Enteries.txt to .reg after downloading.
3. Reboot the virtual machine.

IDEMIA will provide a copy of the documents if required.

In case of any question, please send an email to IDOnePIV@idemia.com

Note: Difference in ID-One PIV cards: V7 and V8 cards

With the ID-One PIV (V7) cards:

1. Windows had the driver imbedded as part of the Win OS software.

With the ID-One PIV 2.4.x (V8) cards:

1. Microsoft has since made the process to allow the OS to determine the card type and automatically download the appropriate minidriver for the ID-One PIV 2.4.x card version being inserted.
2. Federal agency network security protocols are set, to as a standard security measure, to protect the end device. This causes the Win OS not to install driver for the card and issues errors to the end user.

To address this issue:

IDEMIA has provided the required v8.1 Minidriver and supporting documentation to assist agencies with several ways of getting the driver loaded to the machine.

Once an agency has received the .MSI package, it is entirely up to the local systems administrator as how to push them out to the end uses machine. Couple of options follows:

1. The driver can be loaded on a local RDP server, or pushed out to all end user devices manually, or placed somewhere on the local network to be downloaded with a script.
2. The minidriver can be included as part of the Win OS systems images.
3. The installation package can be placed on an OMB share for access by agencies' IT departments.
4. The ID-One PIV 2.4.x cards require that the MS minidriver either be installed or to be downloaded to the local machine in order to function properly and should be a onetime setup.
5. Please call GSA technical support if you have questions concerning this note.

(End of the Document)