



# ID2Travel

An interoperable digital identity credential built on biometrics that can be used to secure and streamline the traveler experience.



## One ID for a secure, seamless, and frictionless journey

ID2Travel is an interoperable platform that uses biometrics and identity proofing to enable a secure, seamless, frictionless passenger experience from mobile check-in through every touchpoint in the passenger journey.

Mobile enrollment is leveraged with a passenger's secured digital credential on their mobile device, biometric readers, and back-end services.

The ID2Travel passenger facilitation solution extends the value of travelers' experience using existing infrastructure, delivering efficient, secure, seamless, and frictionless travel.

### Security at the heart of the process



Three authentication factors are combined for a secure and reliable identity token:

- Biometrics (face, fingerprints)
- Mobile device
- Knowledge-based Authentication (KBA)

## Why IDEMIA?

IDEMIA is **the only company** to have successfully delivered a complete enrollment-to-gate frictionless passenger facilitation solution, proven by IDEMIA and partners around the globe. The solution is built on our #1-ranked facial recognition technology as tested by NIST, and decades-long experience issuing identity credentials (both physical and digital) as the leading provider of driver's licenses in the U.S.

Our CAT (Credential Authentication Technology) machines have been in use by the TSA since 2020, and IDEMIA has been providing enrollment services for TSA PreCheck® and other TSA programs since 2013.

**Our strong position as a provider of biometric identity solutions allows us to offer the only interoperable and modular traveler identity platform that covers the entire passenger facilitation ecosystem.**



### SECURE

*Meets stringent airline security requirements.*



### INNOVATIVE & SCALABLE

*Improves throughput and reduces labor costs.*



### TRAVELER SATISFACTION

*Reduces wait times and provides smooth, frictionless arrival experience.*



### CONTACTLESS

*Touchless biometric readers offer a hygienic solution for high-throughput environments like airports.*



### REUSABLE IDENTITY CREDENTIAL

*Leverages a new form of secured digital identification that adapts to evolving validation methods.*

# ID2TRAVEL SOLUTION COMPONENTS

## ENROLLMENT

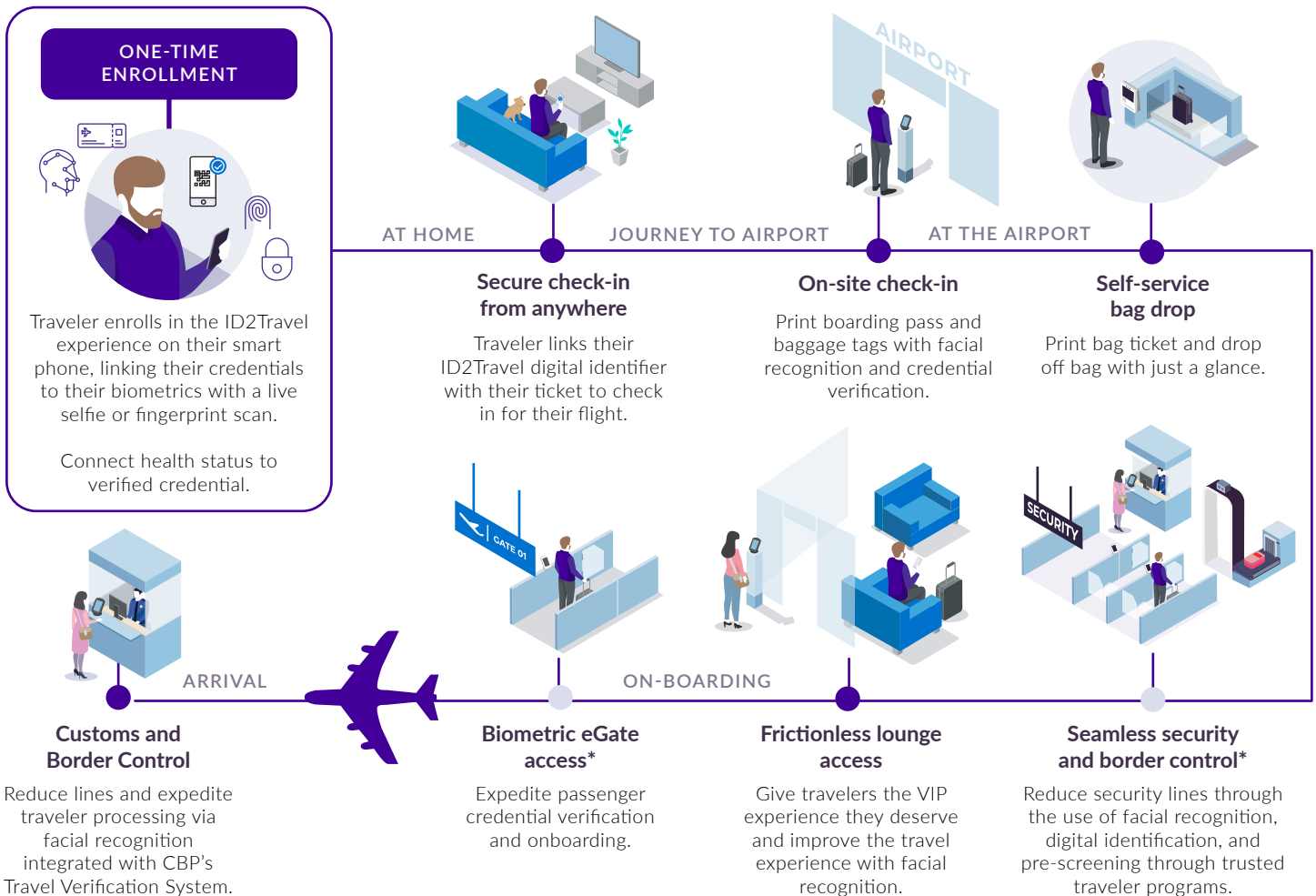
- Mobile enrollment app (SDK integrated with Airline app, white label, or IDEMIA app)
- Web UI (Agent-assisted)

## BIOMETRIC CAPTURE DEVICES

- MFace and VisionPass facial recognition and access control
- MWave touchless fingerprint readers
- Thermal cameras
- Passenger-facing UI through use of kiosks

## BACK-END SERVICES

- Passenger tracking
- Administration UI
- Touchpoint dashboard
- System monitoring
- Centralized configurations
- Logging & analytics
- Fleet management
- Workflow management



\*IDEMIA contributes its technology at these touch points, but not specifically as part of the ID2Travel solution.

"ID2Travel is transforming the entire travel experience. Prior to COVID, Americans took approximately 2.3 billion trips, over a one-year period, and this makes the need for the passenger experience to be even more frictionless and seamless as we return to pre-pandemic travel patterns. With that experience and privacy in mind, the timing couldn't be more ideal to launch our ID2Travel offering in North America to improve passenger flow and maintain a touchless experience, while balancing interoperability throughout the broader travel ecosystem."

— Lisa Sullivan, Senior Vice President, Travel and Transport, IDEMIA I&S North America.