



Minidriver Installation

User Guide

Minidriver Version 2.9.x



Contents

› Introduction	3
› Installation	3
› To Uninstall the Minidriver	5
› Product Environment	5
› Product Support	5

Introduction

This document describes the installation instructions and related information to perform the installation of the IDEMIA ID-One PIV® 2.4.x card minidriver.

Driver Name	Architecture
IDEMIA – SmartCard – 2.9.0.1300	AMD64
IDEMIA – SmartCard – 2.9.0.96	ARM64

Installation

There are three methods to install the IDEMIA card v8.x minidriver.

1. Plug & Play: Windows OS updates the driver

The common option is the plug & play option, for inserting the V8.x card into the card reader, enables to either update or install the driver. Usually, the V8.x card enables the Windows to install the driver if the Plug & Play service option enabled in the Win OS services console. A device manager console can verify the driver version, as displayed in Appendix A.

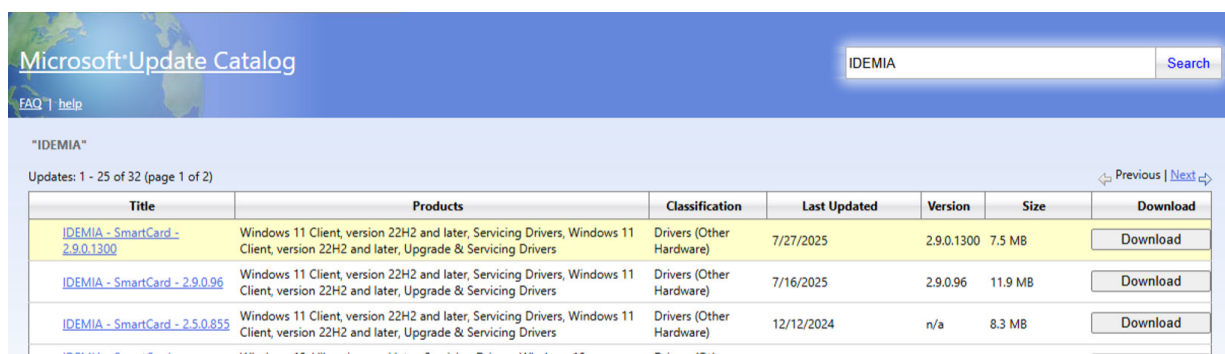
2. Download from Microsoft site

Enterprise IT security policies sometimes prohibit clients/users from downloading directly from the Microsoft Catalog Update site. The Minidriver is available as a download from the Microsoft Update Catalogue site. In case required, the driver can be downloaded by manually entering the Microsoft Update Catalog address in a browser window. For more details, please see Appendix B.

The web site: <https://www.catalog.update.microsoft.com/Search.aspx?q=IDEMIA>

3. Download installation files from <https://na.idemia.com/resources/drivers/>

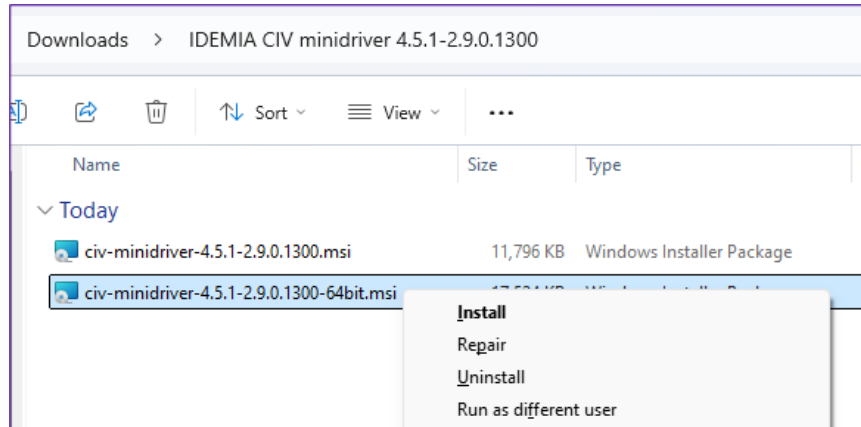
Occasionally, due to security policies, or in case downloads are restricted, an MSI file for Win OS for x86, x64 and ARM64 bit systems is available for download on the IDEMIA driver webpage. The user can download the latest available version from the public website under "Minidriver files".



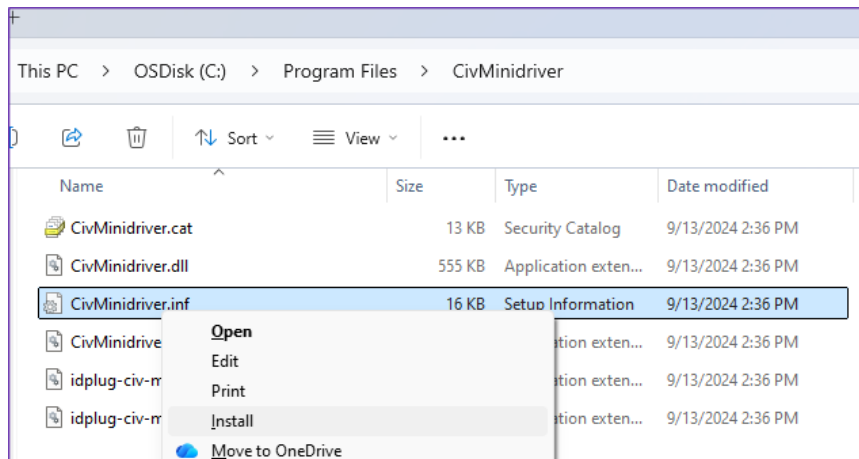
Microsoft Update Catalog						
IDEMIA						
Search						
"IDEMIA"						
Updates: 1 - 25 of 32 (page 1 of 2)						
Title	Products	Classification	Last Updated	Version	Size	Download
IDEMIA - SmartCard - 2.9.0.1300	Windows 11 Client, version 22H2 and later, Servicing Drivers, Windows 11 Client, version 22H2 and later, Upgrade & Servicing Drivers	Drivers (Other Hardware)	7/27/2025	2.9.0.1300	7.5 MB	Download
IDEMIA - SmartCard - 2.9.0.96	Windows 11 Client, version 22H2 and later, Servicing Drivers, Windows 11 Client, version 22H2 and later, Upgrade & Servicing Drivers	Drivers (Other Hardware)	7/16/2025	2.9.0.96	11.9 MB	Download
IDEMIA - SmartCard - 2.5.0.855	Windows 11 Client, version 22H2 and later, Servicing Drivers, Windows 11 Client, version 22H2 and later, Upgrade & Servicing Drivers	Drivers (Other Hardware)	12/12/2024	n/a	8.3 MB	Download
IDEMIA - SmartCard -	Windows 10, Vibrantium and later, Servicing Drivers, Windows 10,	Drivers (Other				

The installation process is shown below

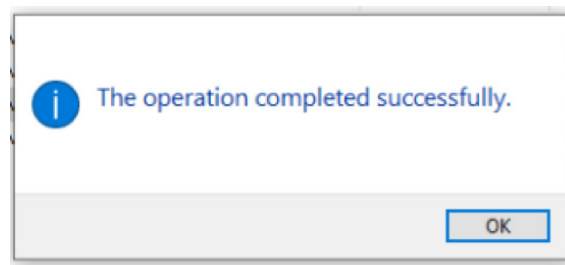
1. After copying the installer file, install by right-clicking the CivMinidriver .msi file. Then follow the screen prompts.



2. Go to the folder "C:\Program Files\CivMinidriver" on the server/machine.
3. Right-click on the file "CivMinidriver.inf" file and select "Install." The Win OS may ask for the Admin account.



4. The process will display the following message.



To Uninstall the Minidriver

Minidriver can be uninstalled using the standard Control Panel/Program and Features in Windows 10 and Windows 11 with the uninstall feature.



Program Name	Company Name	Installed On	Size	Version
IDEMIA Minidriver for PIV/CIV (64-bit)	IDEMIA	11/1/2019	4.59 MB	1.2.5
IIS 10.0 Express	Microsoft Corporation	10/10/2019	53.5 MB	10.0.03203
Instant Booking For Outlook	SharingCloud	10/2/2019	6.55 MB	4.7
Intel® Graphics Driver	Intel Corporation	10/2/2019	74.2 MB	10.18.10.4276

Product environment

The minidriver is compatible with the following Windows environments:

- Windows 10
- Windows 11

The minidriver supports the following V8.x card applets and profiles:

- Applet PIV v2.4.2 with “NIST profile” NPIVP Profile as read-only card
- Commercial Identity Verification (CIV) Profile
- Secure Pin Entry (SPE) Profile

The “NIST profile” is based on NIST's PIV data model and follows all the requirements defined by NIST (ATR, AID, access conditions...). This profile is a read-only profile dedicated to the U.S. government market.

Note: The smartcard and card reader must communicate in T=1 and must support the extended APDU.

Product support

For any questions or to request support, please email SmartCardSupport@idemia.com